

YC SERIES

HEAVY-DUTY SINGLE-PHASE CAPACITOR START INDUCTION MOTOR



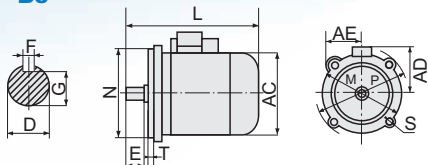
YC series heavy-duty single-phase motors are suitable for small size machine tools and water pumps, especially for family workshops where only single-phase power supply is available. Motors of this series are integrated with up-to-date design, manufacture with the best quality materials, possess the features of pleasant-looking appearance and meet the IEC standard.

YC series motors are of IP44 totally enclosed fan-cooling type, rated outputs is 3HP or below, capacitor starting within rated voltage and 50Hz, the starting torque is three times more than the rated torque and 60Hz is 2.75 times more. Motors for 4HP or over are of capacitor start and run type. They all concentrate the advantages of high starting torque, smooth running, low temperature rising, low noise and greater overload performance. The designation number and nominative values are all in conformity with IEC standards.

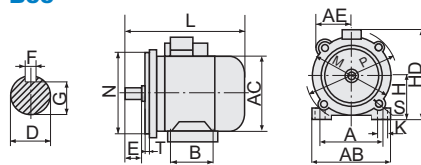
OPERATING CONDITIONS

- Ambient temperature: $-15^{\circ}\text{C} \leq t \leq 40^{\circ}\text{C}$
- Above sea level: not exceed 1000m
- Rated voltage: 110V, 115V, 120V, 220V, 230V, 240V
- Rated frequency: 50Hz or 60Hz
- Protection class: IP44, IP54
- Insulation class: B, F
- Cooling method: ICO141
- Duty: S1 (continuous)

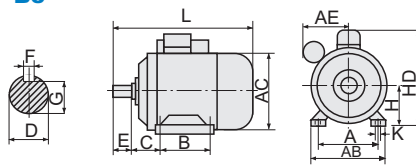
B5



B35



B3



INSTALLATION SIZE & OVERALL DIMENSION

Frame Size	Mounting Dimensions											Overall Dimension							
	H	A	B	C	D	E	F	GD	G	GA	K	AD	AB	AA	BB	HA	HD	L	AC
80	80	125	100	50	19	40	6	6	15.5	21.5	10	110	157	35	130	10	200	310	160
90S	90	140	100	56	24	50	8	7	20	27	10	120	175	35	130	12	230	355	180
90L	90	140	125	56	24	50	8	7	20	27	10	120	175	35	165	12	230	385	180
100L	100	160	140	63	28	60	8	7	24	31	12	130	200	40	180	14	245	415	200
112M	112	190	140	70	28	60	8	7	24	31	12	140	240	50	190	15	270	440	224
132SA	132	216	140	89	38	80	10	8	33	41	12	150	266	50	178	18	302	470	262
132SB	132	216	140	89	38	80	10	8	33	41	12	150	266	50	178	18	302	470	262

TECHNICAL DATA

TYPE	Output		Current (A)	Speed (r/min)	Eff (%)	Power Factor	Ist/In	Tstart/Tn	Tmax/Tn
	HP	kW							
YC80A-2	0.5	0.37	3.5	2840	65	0.77	6.5	2.8	1.8
YC80B-2	0.75	0.55	4.9	2860	68	0.79	6.5	2.8	1.8
YC80C-2	1	0.75	5.1	2880	70	0.80	6.5	2.5	1.8
YC90S-2	1.5	1.1	8.83	2900	72	0.80	7.0	2.5	1.8
YC90L-2	2	1.5	11.4	2920	74	0.81	7.0	2.5	1.8
YC100-2	3	2.2	16.5	2940	75	0.81	7.0	2.2	1.8
YC80A-4	0.37	0.25	3.2	1410	58	0.63	6	2.8	1.8
YC80B-4	0.5	0.37	4.3	1420	62	0.64	6	2.5	1.8
YC80C-4	0.75	0.55	5.8	1430	66	0.69	6	2.5	1.8
YC90S-4	1	0.75	7.13	1440	68	0.73	6.5	2.5	1.8
YC90L-4	1.5	1.1	9.82	1450	71	0.74	6.5	2.5	1.8
YC100L-4	2	1.5	12.4	1460	73	0.75	6.5	2.5	1.8
YC112M-4	3	2.2	17.6	1470	74	0.76	6.5	2.2	1.8
YC132SA-4	4	3	23	1480	75	0.77	6	2.2	1.8
YC132SB-4	5	3.7	27	1480	76	0.79	6	2.2	1.8

The voltage and frequency can be changed as the buyer's requirements, voltage: 110-440V, frequency: 50/60hz.