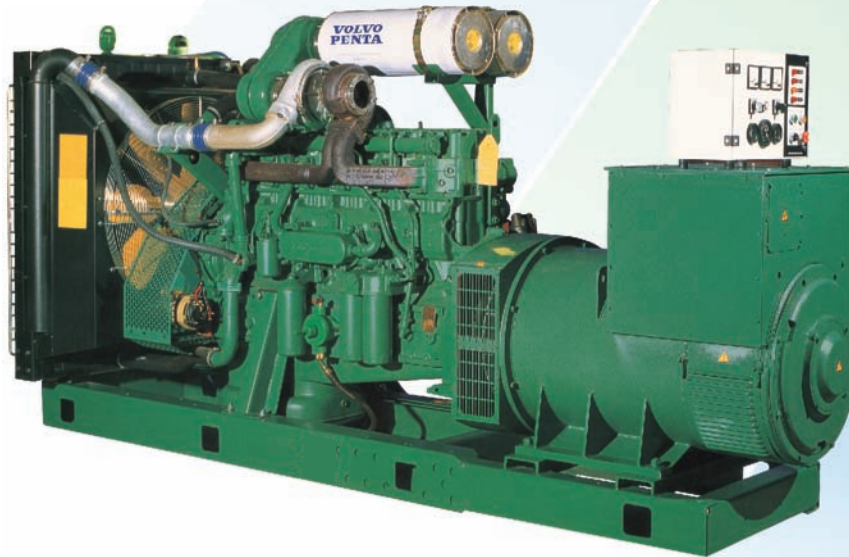


HOPOW-VOLVO

SERIES DIESEL GENERATOR SETS



Model		HPV-75	HPV-88	HPV-112	HPV-132	HPV-160	HPV-180	HPV-220	HPV-280	HPV-330	HPV-360	HPV-400	HPV-440	HPV-500	
Rated Power(KW)		68	80	104	120	150	160	200	260	300	330	360	400	450	
ENGINE	Model	TD520GE	TAD520GE	TD720GE	TAD720GE	TAD721GE	TAD722GE	TAD740GE	TAD940GE	TAD1241GE	TAD1242GE	TAD1630GE	TAD1631GE	TAD1642GE	
	Rated output (kw)	90	105	130	150	180	190	220	290	330	360	400	450	500	
	Governing method	Mechanical													
	Intaking method	Turbocharged							Turbocharged Cooled						
	Fuel Consumption(g/kw.h)	213	206	211	197	206	203	201	200	198			213		
	Cooling Starting Method	Closed water cooled/electric starting													
GENERATOR	Model	HP-75	HP-88	HP-112	HP-132	HP-160	HP-180	HP-220	HP-280	HP-330	HP-360	HP-400	HP-440	HP-500	
	Rated output (kw(KVA))	75	88	112	132	160	180	220	280	330	360	400	440	500	
	Rated Current(A)	122.7	144.3	187.6	216.5	270.6	288.6	360.8	469.1	541.3	595.4	649.5	721.6	811.9	
	Rated Voltage(V)	400V/230V													
	Frequency(HZ)	50/60HZ													
	Power Factor(COS&)	0.8(lagging)													
	Phase / Connection	3-phase 4-wire							Y type connection						
	Excitation	Harmonic Excitation or phase Compound or brushless													
	Voltage Regulation	Manual/Automatic													
Starting	Manual/Electric start														
Net Weight(kg)	1050	1150	1450	1600	1550	1550	1650	2050	2150	2300	2730	2800	2850		
Packing size LWH(cm)	210x76x140	275x76x140	275x87x140	275x100x152	275x86x150	265x95x150	300x100x155	315x112x160			334x120x183	365x130x180			