

# TFW SERIES

## THREE-PHASE A.C. SYNCHRONOUS BRUSHLESS GENERATOR

HP Brushless series with three-phase synchronous, base on absorbing and digesting the advanced technology of international electrical industry, are a new-type designed by ourselves. advance technology of manufacturing electric machinery. It's the new-type designed and developed A.C. synchronous generator by ourselves.

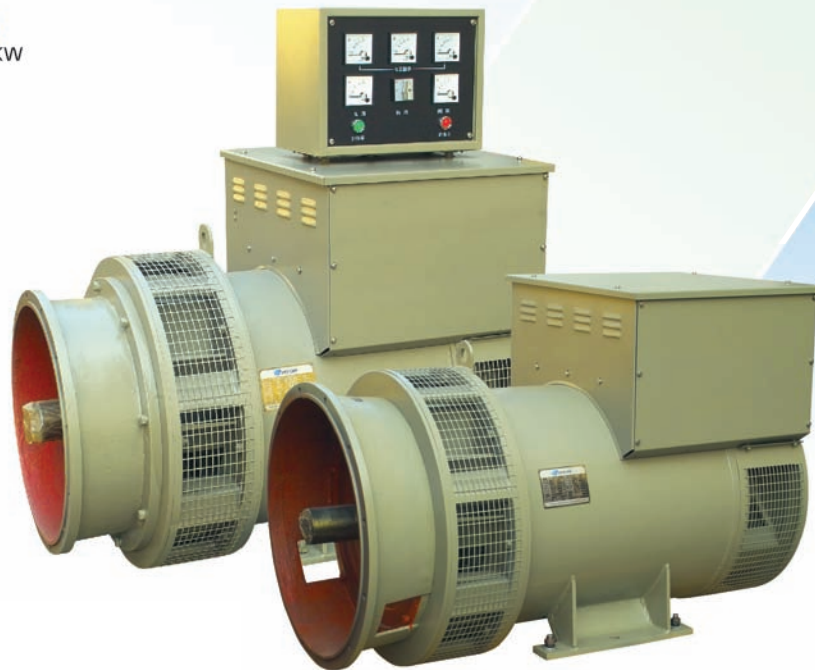
The series conform with most of the international standards, Such as: International Electrician Committee Command Standard IEC34 International Standardization Organization Command Standard ISO8528 NEMA Standard.

The products have outstanding performance, reliable quality, convenient maintenance. The generator and the engine can be connected with steel or flexible material.

As a small-type generating station, it can be used in factories, buildings and work sites for lightening and electric power source.

### MAIN SPECIFICATIONS

- Rated output: 10KW to 350KW
- Rated voltage: 440/230V
- Rated frequency: 50/60Hz
- Rated speed:1500/1800rpm
- Three-phase four-wire
- The Insulation Class: H



### TECHNICAL DATA

Model	Rated Capacity (KVA)	Rated Output (KW)	Rated Voltage (V)	Rated Current (A)	Power Factor (COS )	Rated Speed (r.p.m)	Rated Frequency (Hz)	Gross Weight (Kg)
TFW-5	7.5	5	230/400	9	0.8	1500/1800	50/60	74
TFW-8	10	8	230/400	14.4	0.8	1500/1800	50/60	86
TFW-10	12.5	10	230/400	18	0.8	1500/1800	50/60	102
TFW-12	15	12	230/400	21.7	0.8	1500/1800	50/60	108
TFW-15	17.5	15	230/400	27.1	0.8	1500/1800	50/60	144
TFW-20	25	20	230/400	36.1	0.8	1500/1800	50/60	160
TFW-30	40	30	230/400	54.1	0.8	1500/1800	50/60	230
TFW-40	50	40	230/400	72.2	0.8	1500/1800	50/60	263
TFW-50	67.5	50	230/400	72.2	0.8	1500/1800	50/60	317
TFW-64	80	64	230/400	115.6	0.8	1500/1800	50/60	410
TFW-75	90	75	230/400	135.5	0.8	1500/1800	50/60	480
TFW-90	110	90	230/400	162.6	0.8	1500/1800	50/60	631
TFW-120	150	120	230/400	216.8	0.8	1500/1800	50/60	705
TFW-150	187.5	150	230/400	271	0.8	1500/1800	50/60	769
TFW-200	250	200	230/400	360.8	0.8	1500/1800	50/60	920
TFW-250	312.5	250	230/400	451	0.8	1500/1800	50/60	980
TFW-300	375	300	230/400	541	0.8	1500/1800	50/60	1035
TFW-350	437.5	350	230/400	631.5	0.8	1500/1800	50/60	1094
TFW-400	500	400	230/400	721.7	0.8	1500/1800	50/60	1120
TFW-500	600	500	230/400	902	0.8	1500/1800	50/60	1340